

# 55 mm T-bar®

## Easy to install Ceiling Grid for Cleanrooms

- **Modular Design**
- **Easy to install**
- **Heavy duty, walkable**
- **Suitable for ISO Class 5 – ISO class 8**



The AAF inverted T-bar ceiling grid is a 55 mm wide ceiling grid system designed to accommodate individual filter modules, blank panels and lay-in-light fixtures in ISO Class 5 to ISO Class 8 cleanrooms. For ISO Class 5 applications, the entire cleanroom ceiling is composed of AstroCel™ Filter Hoods, AstroFan FFU filters and teardrop light fixtures.

### **The System**

The AAF 55 mm T-bar system is a Cleanroom ceiling designed as a heavy – duty modular frame construction for non-pressurized applications. Designed as a walk – frame construction with high deflection strength, consisting of 55 mm

wide aluminium extruded main and cross runners of identical shape to form a nodal system. The aluminium extrusions come with an anodized surface treatment VB6/VOM1 / 10 µm or in a white epoxy coat Ral 9010.

The main runners are made of 3.6 m long aluminium extrusions which are easy to handle and install. A typical AAF T-bar grid system includes for the required number of main runners, cross runners, noggin clips and wall angles to accommodate a ceiling grid design layout with standard grid openings of 600x1200 mm. The system can, however, be customized to any size of grid opening or design specification.

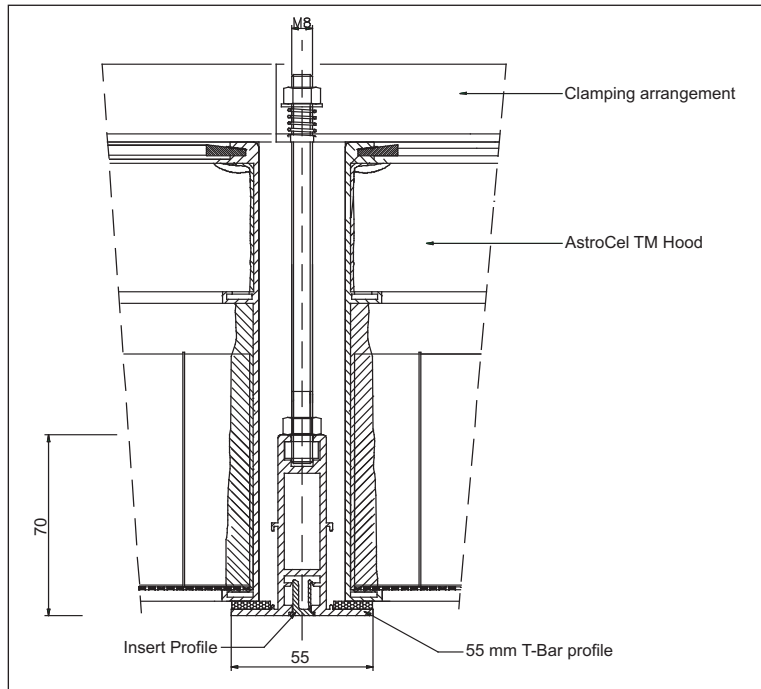
The main profiles are installed between the wall angles. Cross bar profiles are installed between the main runner profiles with the help of noggin clips and secured by accurate extruded top plates that lock the main profiles with the cross runners. Noggin clips facilitate quick and easy installation.

Installation of the main runner and cross runner assemblies can be achieved by applying a little thumb pressure to the noggin clips and inserted top plate. The ceiling is suspended from the main structure by way of M8 threaded rods and can be adjusted to the required level by way of turnbuckles.

## 55 mm T-Bar®

### The Installation Procedure

- Install the wall angles in the required locations.
- Install the main profiles by connecting the M8 headed rod ceiling hangers to the upper ceiling structure. If needed, adjust the turnbuckles until the profiles are level. The main profiles can be extended / connected using noggin clips and top plates.
- Install the cross profiles between the main profiles using the noggin clips and top plates through the opening in the main profile.
- Use a spirit level or laser leveller to check that the grid is hanging level.
- Install self-adhesive gasket on sealing surface of all profiles and wall angles.
- Install the blank panels and lights.
- Install the filter modules.



### AAF Filter Modules

AAF has a range of filter products which are suitable for use with the T-bar grid system:

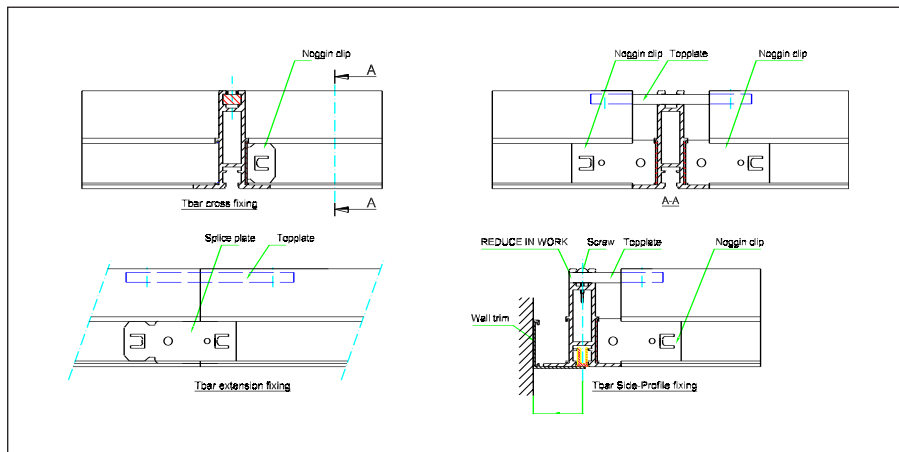
AstroCel TM Hood

AstroCel CM Hood

AstroFan Fan Filter Unit

### Ceiling Accessories

The AAF T-bar grid system is designed to accommodate blank panels and light fixtures. AAF blank panels are available in laminated particle board, white painted MDF and many other materials. A wide range of layin and teardrop light fixtures is available.



### AAF-International B.V.

P.O. Box 7928  
1008 AC Amsterdam  
The Netherlands  
Tel.: + 31 20 549 44 11  
Fax: + 31 20 644 43 98  
www.aafeurope.com

### International AAF Offices:

Amsterdam (NL), Athens (GR), Brussels (B),  
Cramlington (GB), Dortmund (D), Dubai  
(UAE), Helsinki (Fin), Istanbul (TR), Lisbon  
(P), Louisville, Ky (USA), Madrid (E), Mexico  
(Mex), Mozzate-Co (I), Paris (F), Bangalore  
(IND), Riyadh (KSA), Shah Alam (Mal),

Suzhou, Shenzhen (PRC), Singapore,  
Taiwan, Vienna (A)

### AAF Agents:

Johannesburg (RSA)



AAF has a policy of continuous product research and improvement and reserves the right to change design and specifications without notice.