

PharmaGel Hood - type PHG

Terminal HEPA Filter Module for Gel Seal Filters

- **Unique gel seal execution**
- **Wide range of sizes available**
- **2 inlet designs: circular top circular side**
- **Rigid leak free construction**
- **Differential pressure connection for room side testing**



The Module

The PHG Hood is a terminal filter module equipped with a gel seal replaceable HEPA /ULPA filter. The housing is made of corrosion resistant steel with a white powder coated epoxy finish and is fitted with a 4-way diffuser, swirl diffuser or perforated plate diffuser, finished in a matching white gloss. For neat appearance, the module has a concealed grille fixing.

To accommodate different installation situations, the PHG Hood type G is available with a circular top inlet, circular side inlet. A differential pressure connection is

included for room side testing. The module is available in mild steel as standard. A stainless steel execution is available as an option.

The Filters

The PHG Hood is designed to accommodate gel seal HEPA/ULPA filters with depths of 80 or 128 mm. Depending on the application, filters with efficiencies of 99.995% (at MPPS), 99.9995% (at MPPS) and better can be used. For ease of installation and maintenance, the PHG Hood design enables filter installation and exchange from the room side. The housing has a single knife

edge which forms an airtight seal as the knife edge interfaces with the gel.

The Applications

The PHG Hood is designed for use in cleanrooms and clean areas such as in the pharmaceutical, food, microelectronic and healthcare industries. With the correct air filter installed and using the perforated plate diffuser, the PHG Hood is suitable for Fed. Std. Class 100 and BS 5295 Class E and F applications. The module can also be used in extraction systems of rooms where toxic or hazardous materials are present.

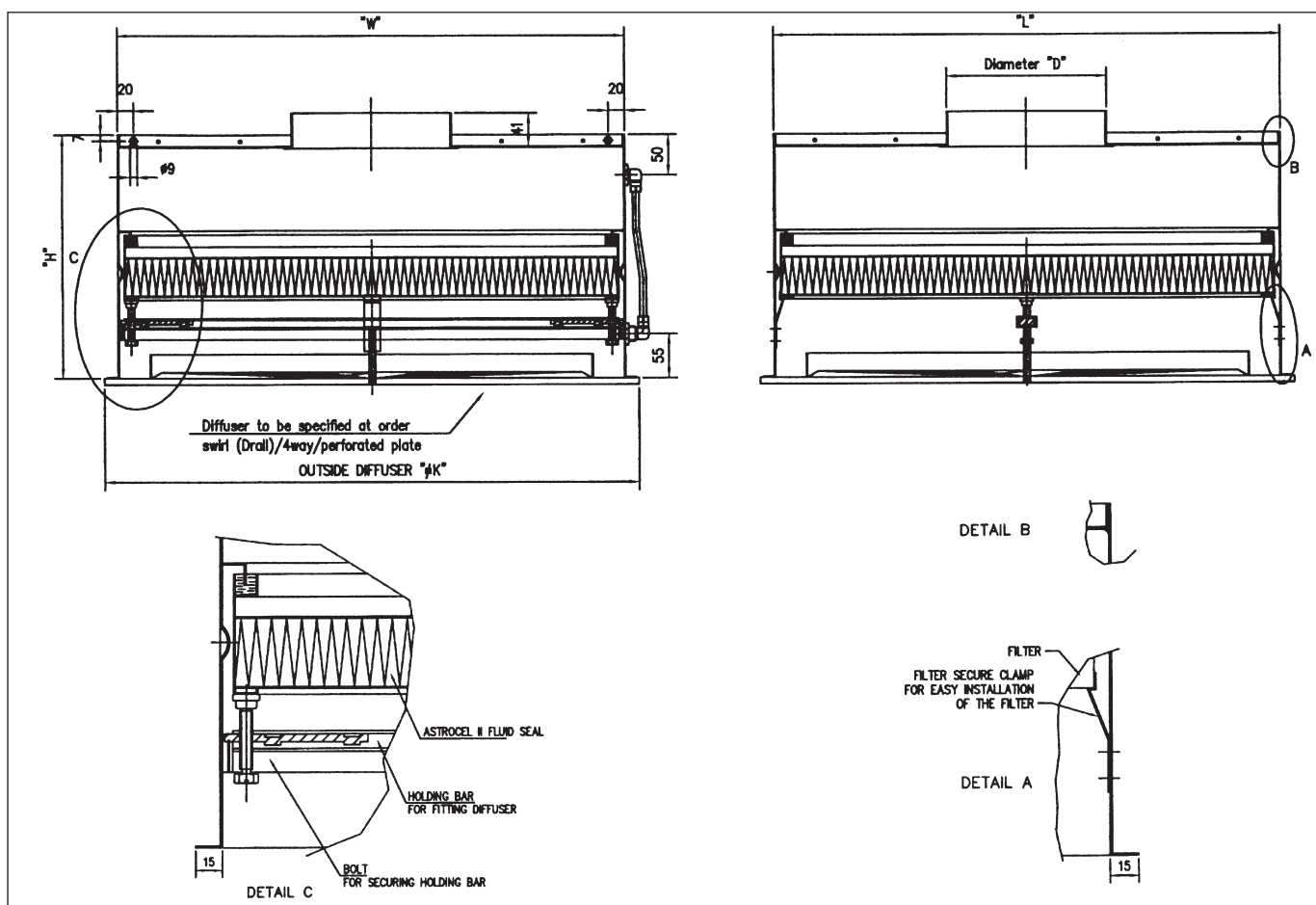
Better Air is Our Business®



PharmaGel Hood - type PHG

| Style Code | Nominal Module Dimensions ¹⁾ W x L x H (mm) | H Side inlet (mm) | Circular Top/Side Inlet Dia. (mm) | Filter Size W x L x D (mm) | Capacities in m ³ /s @ Initial Pressure ³⁾ | |
|-------------|--|-------------------------|--|----------------------------------|---|--------|
| | | | | | 125 Pa | 250 Pa |
| PHG 12-12-2 | 321 x 321 x 300 | 440 | 150 | 305 x 305 x 80 | 0.04 | 0.07 |
| PHG 14-14-2 | 321 x 321 x 348 | 488 | 150 | 305 x 305 x 128 | 0.06 | 0.11 |
| PHG 18-18-2 | 473 x 473 x 300 | 440 | 200 | 457 x 457 x 80 | 0.09 | 0.17 |
| PHG 18-18-4 | 473 x 473 x 348 | 488 | 200 | 457 x 457 x 128 | 0.14 | 0.26 |
| PHG 24-24-2 | 626 x 626 x 300 | 440 | 200 | 610 x 610 x 80 | 0.16 | 0.32 |
| PHG 24-24-4 | 626 x 626 x 348 | 538 | 250 | 610 x 610 x 128 | 0.25 | 0.48 |

- 1) The height of the module is based on top inlet.
- 2) 15 mm flanges undrilled.
- 3) Based on filters, 99.995% efficiency at MPPS (H14 acc. to prEN1822).
- 4) Other sizes are available on request.
- 5) Please add 15 Pa for internal pressure drop inside the housing.



AAF-International B.V.
P.O. Box 7928
1008 AC Amsterdam
The Netherlands
Tel.: + 31 20 549 44 11
Fax: + 31 20 644 43 98
www.aafeurope.com

International AAF Offices:
Amsterdam (NL), Athens (GR), Brussels (B),
Cramlington (GB), Dortmund (D), Dubai
(UAE), Helsinki (Fin), Istanbul (TR), Lisbon
(P), Louisville, Ky (USA), Madrid (E), Mexico
(Mex), Mozzate-Co (I), Paris (F), Bangalore
(IND), Riyadh (KSA), Shah Alam (Mal),

Suzhou, Shenzhen (PRC), Singapore,
Taiwan, Vienna (A)

AAF Agents:
Johannesburg (RSA)



AAF has a policy of continuous product research and improvement and reserves the right to change design and specifications without notice.

CR-3-603-IN-0307

© 2007 AAF International